



## CMPP TESTING TIP SHEET

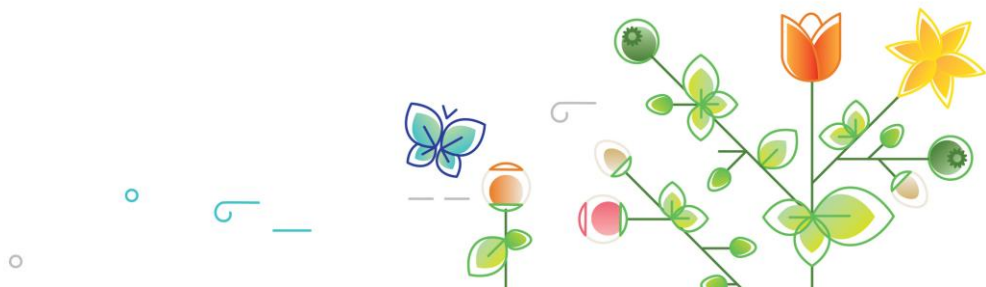
### Exam Preparation

- Get a good night's rest before the exam
- Try to take the exam day off from work so you are focused on the exam
- Know what times of day you are at your peak
  - If you are a morning person, take the exam first thing in the morning
  - If you are an evening person, take the exam in the afternoon
- Be familiar with the material in the [Critical References](#) on the ISMPP website
- Review the material in the [Supplemental References](#) and [Useful Websites](#) on the ISMPP website as needed
- Review the Sample Examination Questions in the [Candidate Handbook](#) so you are familiar with the format of exam questions
- Familiarize yourself with the Candidate Handbook and the exam rules before entering the exam test site
- Have a positive attitude before and during the exam

### Test Taking Tips

- Take time at the start of the exam to read the directions carefully
- Do the tutorial at the beginning of the exam
- Read the question carefully and in its entirety before trying to answer it
- Don't spend too much time on each question, as you have a finite end time
  - Don't rush through the exam since you have limited time, but rather pace yourself

### ISMPP CMPP™ Mentor Program





- If you feel stuck and do not know the right answer after spending a few minutes on the question, take an educated guess and move on
  - Note that your exam score is calculated using the number of correct answers out of the total number of questions; ie, you are not penalized for incorrect answers
- Note the questions you needed extra time on and if you finish the exam early, go back and review those questions
- If you believe there is more than one correct answer, choose the BEST answer
- If you feel yourself getting flustered, close your eyes and take 3 deep breaths. Re-read the question and continue
- After reading a question, answer it in your mind before reviewing the answer options. This will help prevent you from talking yourself out of the correct answer
- Read every answer option prior to choosing a final answer
- Eliminate answer options that you are 100% sure are incorrect before selecting the answer you believe is correct. Even when you believe you know the right answer, first eliminating those answers you know are incorrect will help ensure your answer choice is correct
- Read the entire case before reading the question
- Some questions will have a small introductory passage, and it can be tempting to ignore the passage introduction to save some time. However, this is not recommended. These introductory passages are meant to give you a better understanding of the context of the question
- If you have extra time after completing the exam, review your answers

**GOOD LUCK!**

**ISMPP CMPP™ Mentor Program**

